

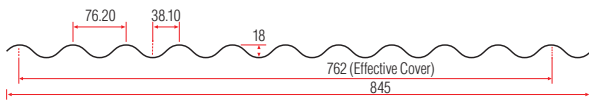
CORRUGATE

Roofing
Industries
roof.co.nz

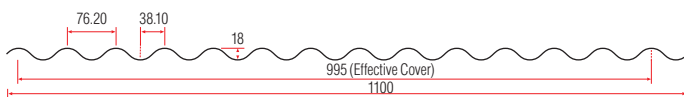


CORRUGATE

CORRUGATE



WIDE CORRUGATE



All measurements are in millimetres

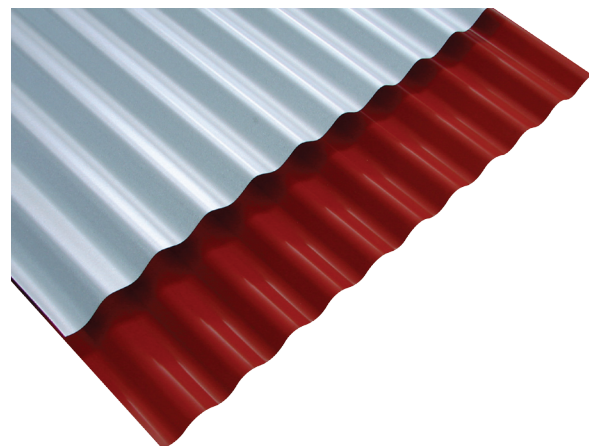


Description

Corrugate remains an ageless icon, and as a cost competitive and trend setting roofing and cladding material continues to gain in popularity. Corrugate offers a stylish alternative to today's building designers and home owners alike, allowing creative flair and individuality during the design process.

Product flexibility coupled with a small amount of imagination will ensure a distinct point of difference to other homes and buildings in the vicinity.

Corrugate is available in both standard and wide cover widths. (Wide cover widths subject to minimum quantity).



CORRUGATE

Applications

- Residential roofing & cladding
- Rural and lifestyle roofing & cladding
- Commercial roofing & cladding
- Drape/spring curving
- Bull nose
- Horizontal cladding
- Ceilings and linings
- Acoustic ceiling linings
- Fencing

Roof Pitch

In accordance with E2/AS1 of the NZ Building Code, the minimum pitch for Corrugate is 8°. For end lapped sheets or a roof length greater than 18m, contact Roofing Industries for specific advice.

Materials

- Zincalume® Steel: 0.40mm or 0.55mm BMT, AZ150 (150gm/m²) G550 Mpa Yield Stress

- Galvanised Steel: 0.40mm or 0.55mm BMT, Z450 (450gm/m²) G550 Mpa Yield Stress
- Pre-painted **COLORCOTE**® or **COLORSTEEL**® over Zincalume® 0.40mm or 0.55mm BMT, AZ150 (150gm/m²), G550 Mpa Yield Stress
- Prepainted **COLORCOTE**® or **COLORSTEEL**® over Galvanised Steel: 0.40mm or 0.55mm BMT ZM275 (275gm/m²) G550 Mpa Yield Stress
- 0.55mm BMT may be supplied as G300 Mpa Yield Stress

For information on Aluminium, Stainless Steel and Copper Corrugate, contact Roofing Industries.

Roof Application

Timber Purlins 12 x 50 Timbertite® class 4 screws with neos or 60mm Weatherseal® nails*

Steel Purlins 12 x 45 Steeltite® class 4 screws with neos*

- Fix side laps and every second crest to: Ridge, Hip, Valley, Gutter and Periphery areas
- For the remainder of the roof: Fix Side laps, Miss 2, Hit 1, miss 2 etc

*For sheet lengths 8-18 metres the lower 50% of the roof should be fixed using oversize holes at fastening points and a 30mm EPDM and matching metal profile washer. For sheets in excess of 18 metres refer to our website www.roof.co.nz.

Walling Application

Fix in the pan adjacent to every side-lap over rib and every second pan using Class 4 Timbertites® or Steeltites® and neos as appropriate, ensuring that when the fastener is into timber it is of sufficient length to penetrate the framing by 25mm.

Note: the above recommendations are suitable for steel based materials, for other materials refer to our website www.roof.co.nz.

Curving

Steel substrate Corrugate can be spring curved to the following radius.

0.40mm BMT–12 metres
0.55mm BMT–10 metres

Corrugate can be bullnosed or curved to a minimum radius of 300mm.

Ordering

Roofing Industries staff can provide technical assistance to ensure accurate ordering of roofing and accessories thereby avoiding costly errors. Corrugate is manufactured and delivered cut to length.

Handling and storage

- On delivery, visually inspect sheets for damage.
- Store Corrugate and accessories on evenly spaced and supportive dunnage, clear of the ground and under cover. If packs become wet and the product not used immediately, separate the sheets to allow air circulation and drying.
- Do not drag sheets across each other.
- If protected with strippable plastic film, keep under cover and remove as the product is being installed.

Installation

Prior to commencing your project, please refer to Roofing Industries Handling Storage and Installation Guide, E2/AS1 and the NZ Metal Roof and Wall Cladding Code of Practice. Failure to install the product to industry requirements will void the warranty.

Maintenance

Regular maintenance will extend the life of the roof and accessories. It is strongly advised that areas not receiving regular rain washing should be washed with freshwater on a regular basis. On purchasing your roof it is imperative to request a copy of the maintenance guide(s) and familiarise yourself with industry requirements. Failure to do so can void the warranty.

Warranties

Warranties meet the statutory requirements of the NZ Building Code, are available on request and reflect our New Zealand owned and operated company, test facilities and local climatic conditions. Sample warranties are available at website www.roof.co.nz.

SPECIFICATIONS

Sheet width: 845mm & 1100mm	Sheet coverage: 762mm & 995mm
Sheet length: Any length (Subject to transportation)	Minimum Pitch: 8°

SPAN TABLES (Steel Substrate Material)

Type of Span	Maximum Span (Metres)			Maximum Span (Metres)		
	0.40mm BMT			0.55mm BMT		
	Wind Zone			Wind Zone		
	Low & Medium	High	Very High	Low & Medium	High	Very High
Intermediate	1.200	1.100	0.900	1.600	1.450	1.200
End	0.700	0.700	0.650	0.950	0.950	0.900

Durability

Selection of the correct grade of material and appropriate surface coating is imperative to ensure Corrugate will perform satisfactorily in the environment it is to be installed, and meets the requirements of The NZ Building Code. Environmental Categories and Surface Coating literature is available on request.

Accessories

A full range of matching accessories is available, including Ridging, Ridgecaps, Flashings, Underlays, Insulation, Fasteners, Rotary Roof Ventilators and Rainwater systems.

Translucent and Transparent roofing

Corrugate is also available as glass reinforced, polycarbonate and PVC roofing and cladding.

Fixings and Fasteners

Fixings and fasteners are to be of an approved type, compatible with all materials, the environment and meeting the requirements of the NZ Building Code. Installation is to be in accordance with E2/AS1 and the NZ Metal Roof and Wall Cladding Code of Practice. Further information is available via the www.roof.co.nz website.

Your distributor

AUCKLAND (Head office)

Roofing Industries Ltd
5 John Glenn Avenue,
North Harbour
PO Box 302-385
North Harbour 0751
Ph: (09) 414 4585
Fax: (09) 414 4586
office@roof.co.nz

WHANGAREI

Roofing Industries (Northland) Ltd
38 Winger Crescent, Kamo,
Whangarei
PO Box 883
Whangarei 0112
Ph: (09) 437 2040
Fax: (09) 437 5010
northland@roof.co.nz

WAIKATO

Roofing Industries (Waikato) Ltd
Unit 4/550 Te Rapa Rd
Te Rapa, Hamilton
PO Box 20281 Te Rapa,
Hamilton 3241
Ph: (07) 849 5115
Fax: (07) 849 2115
waikato@roof.co.nz

TAUPO

Roofing Industries (Taupo) Ltd
1158 Rakaunui Rd
Taupo
PO Box 408
Taupo 3351
Ph: (07) 376 7971
Fax: (07) 376 7972
taupo@roof.co.nz

PALMERSTON NORTH

Roofing Industries (Central) Ltd
653 Tremaine Ave
Palmerston North
PO Box 4584
Palmerston North 4410
Ph: (06) 353 8480
Fax: (06) 353 8470
central@roof.co.nz

SOUTH ISLAND

Roofing Industries Ltd
220a Annex Road
PO Box 6248
Upper Riccarton
Christchurch 8442
Ph: (03) 339 2324
Fax: (03) 339 2325
south@roof.co.nz



It should be noted that this technical data sheet is based around the requirements of E2/AS1 of the NZBC. For buildings or uses that are outside the scope of, or NOT required to comply with E2/AS1 alternative technical data may apply. Please contact Roofing Industries Ltd.

This literature should be read in conjunction with our published technical information



Roofing Industries Technical Helpline 0800 844 822 WWW.ROOF.CO.NZ