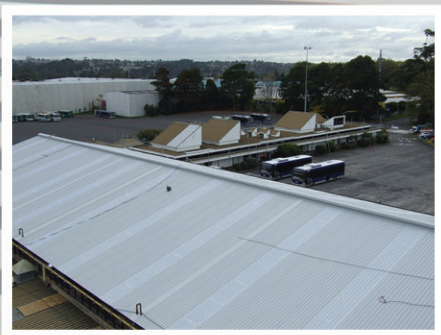


# Roof LINK<sup>®</sup>

THE OFFICIAL JOURNAL OF THE ROOFING ASSOCIATION OF NEW ZEALAND  
Featuring Roofing Industry Training, Industry and Membership News



## H & S investment paying off

*Metro Roofing Ltd has reroofed two NZ Bus depots, testing the effectiveness of its investment in H & S which began long before publication of the two guidelines on working at height and working on roofs.*

**CONFERENCE LAUNCH** – RANZ How To On-Site Guide – Metal Roof Flashings – pages 3 & 13

**NEW RULES** for signing off your work – pages 15 & 17

**PLUS** Life in Christchurch now, conference preview, fixing valleys, heat transfer in low slope roofs, Code of Practice update from MRM



ROOFING FEATURE

# NZ Bus re-roofs test effectiveness

**Long before the launch of the Best Practice Guidelines for Working on Roofs by MBIE last year, Metro Roofing Ltd was ramping up its H&S measures to be fully compliant with the regulations. But a recent re-roofing contract for NZ Bus has fully tested the effectiveness of the company's \$235,000 investment in health and safety over the last four years.**

NZ Bus is the country's largest urban bus service operator with its depots in Wiri and Swanson needing replacement of old and leaking roofs on the buildings where servicing and maintenance of the buses takes place.

Attention to H&S was, according to NZ Bus procurement manager Lorraine Moulton, key to RANZ member Metro Roofing Ltd being awarded the joint contract to re-roof the depots, both workshops remaining

fully operational throughout the process. From the get-go Rob hired a scissor lift for the roof measures which really impressed the client when considering tenderers for the contract.

What the jobs emphasised for Metro principal Rob Anderson is that when a construction company or builder is not involved then the roofing company becomes the main contractor and responsible for the safety of all employees and visitors to site. In this case there were over 130 employees at the Wiri depot. It's something he feels a number of members may not realise. So when 2.7m long asbestos sheets are in the mix and must be removed over a fully functioning vehicle workshop, attention to site specific safety plans become a pre-requisite of the contract.

To show he's taking H&S seriously, Rob has implemented a system of daily task

analysis sheets for every Metro job – no matter how small.

Having landed the NZ Bus contract Rob says the company has learned a lot from what has been required to re-roof both buildings over the last few months.

"We initially went to measure the bus depot roofs and take photos and realised the only way to do this properly was to hire access equipment", says Rob. "It was undoubtedly what sealed the deal for us as I know a number of other companies turned up to quote and just walked away".

The roofs at the Waka Pacific (Wiri) depot and Go West (Swanson) depot both leaked badly but the Wiri contract had the additional component of 45 year old, curved 26m SuperSix sheets covering a 2200sqm area to be removed. Fully compliant with asbestos removal requirements, Metro hired a machine featuring two 17m pallet lifts for taking off the asbestos so no man-handling



**Opposite page:**  
2200sqm of curved asbestos sheeting was removed at Wiri and replaced with Ribline® 960 .55 and Wonderglas GC clears.

**This page:**  
Far left, new bracket system for anchoring the scaffolding; Metro employee on some detailing at the apex of the Swanson roof; right, Cool Tint sheeting has brought more light into the Swanson workshop.

CONTACT DETAILS:		
SITE ADDRESS:	Metro Roofing	SITE SUPERVISOR:
BUSINESS NUMBER:	415 0863	SITE SUPERVISOR NUMBER:
SITE HAZARDS	CONTROLS REQUIRED	Check
Visitors / Contractors	Everyone must be inducted to this worksite	✓
Trips / Slips	Keep site tidy & walkways clear / use bins / cap steel	✓
Electr / H / L	Keep clear / use tagged & tested leads & tools	✓
Ladders	Keep off / commercial grade / trained users only	✓
Power & Hand Tools	Keep clear / trained users only / wear PPE	✓
Noise	Keep clear / wear hearing protection	✓
Excavations	Keep clear / fence off / cover holes	✓
Vehicles / Heavy Machinery	Keep clear / stay visible to operator / licensed operators only	✓
Scaffold / Work Platforms	Keep off / authorised users only	✓
Fall from height	Only trained workers at height / use fall protection	✓
Overhead work	Visitors keep clear / secure tools & objects from falling / wear PPE	✓

**Below left:**  
Metro is signed up to Hazard Co's Premium package; right, the Swanson depot roof nearing completion with the office/admin block in the distance soon to be re-roofed.



# s of company's H&S compliance

of the sheets would be required. As the SuperSix was removed, safety netting and then Ribline® 960 .55 was installed, along with some clear panel sections across the roof comprising Ampelite's Wonderglas GC (Opal) sheeting. The four roofers used a fall arrest system when required as the best means of protection from falls, edge protection being provided from deployment of Metro's two scissor lifts. Throughout the removal process Dowdell & Associates were monitoring contamination (including below where the roof was being stripped) and even they were surprised by the 0.00 reading recorded. For Rob's own peace of mind he included his own quality testing during the process.

Assessing the H&S requirements for this contract Metro recognised the need for an enhanced level of expertise to fulfil the role of main contractor, upgrading to Hazard

Co's Premium package. Since launch of the guidelines, the company has also invested in fall edge protection scaffold, purchasing 250lm of 6m high material (enough to scaffold two houses) together with Metro's own bracket system designed to pull up under the soffit for anchoring of the scaffold. The Go West depot is suitably scaffolded for the remainder of the re-roof process on the office and administration block which will feature a mixture of 200lm of membrane plus some metal roofing.

"The Swanson roof, comprising Dimond 400 trough section, was 35 years old and leaking badly when our team commenced the re-roof", says Rob. Once again with a fully operational workshop beneath, the sheets were removed working across the roof space purlin-by-purlin, safety netting installed and then Ribline® 960 .55 across the 5000sqm roof area, interspersed with

sheets of Alysint's CoolTint clear sheeting.

"I know roofing contractors have had to pick up and run with a lot since the guidelines came into being but one of the biggest problems we faced was a lack of sufficient scaffolding material available to service what companies such as ours required", said Rob.

"I was let down by three different scaffolding companies so made the decision to invest in my own system because we couldn't afford to lose business because of not being able to meet the H&S requirements. In addition to the investment Metro has paid for all training, qualifications and licensing for staff including three apprentices because it's the only way to ensure that all employees are suitably qualified for the job they do.

"We've learned a lot on this contract but then H&S is an on-going process – we're learning all the time."

